



Standard Gain Horn Antenna

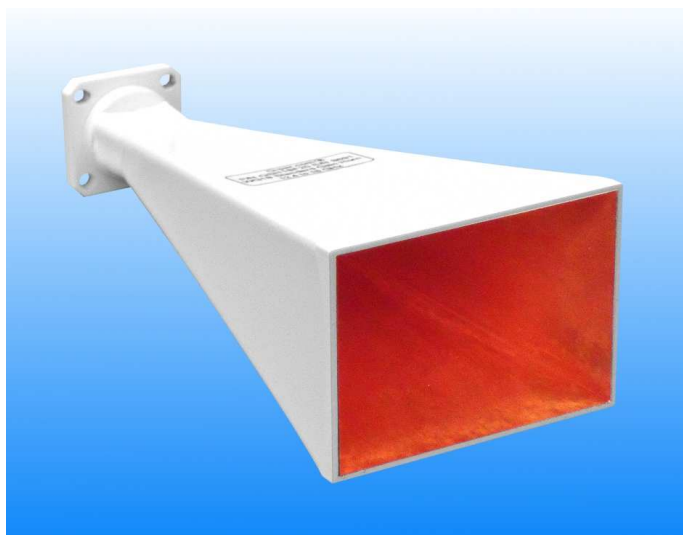
12.4 to 18 GHz

WG18 WR62 R140

Catalogue number: **QSH-SL-12-18-F-20**

Q-par reference: **QMS-00200**

Contents: **Summary**
Typical Gain / Antenna Factor
Typical Beamwidth / Patterns
VSWR



4TECT

ООО «4TECT»

Телефон: +7 (499) 685-4444

info@4test.ru

www.4test.ru

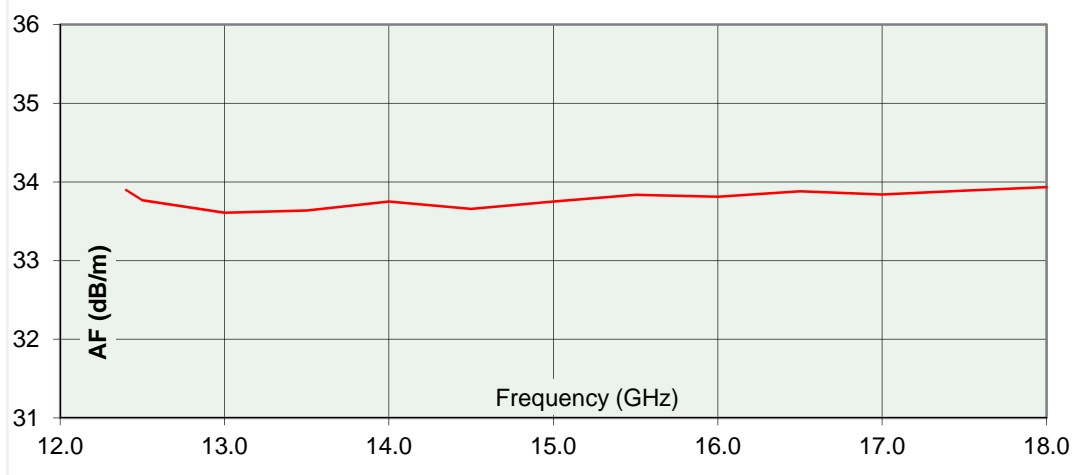
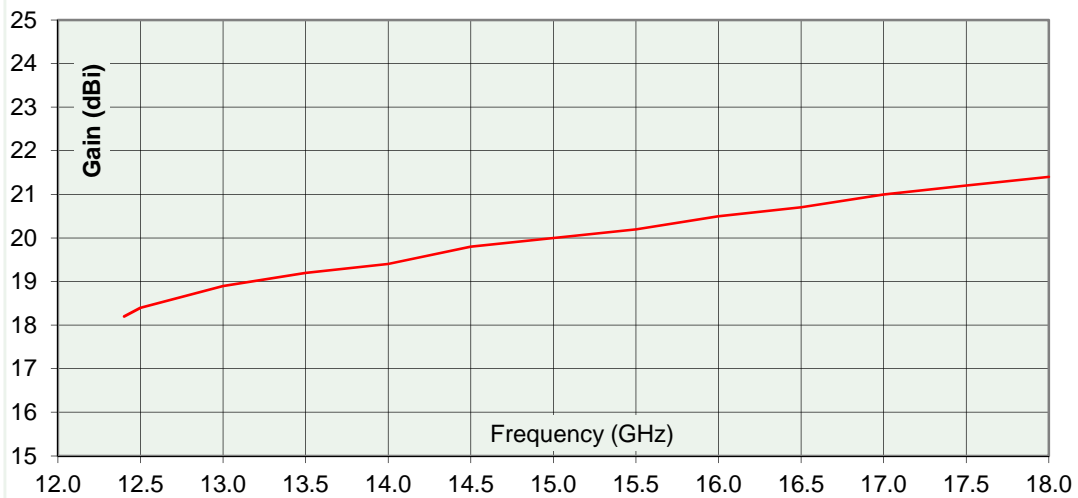
STEATITE
COMPUTING - POWER - COMMUNICATIONS
A Solid State Group Company

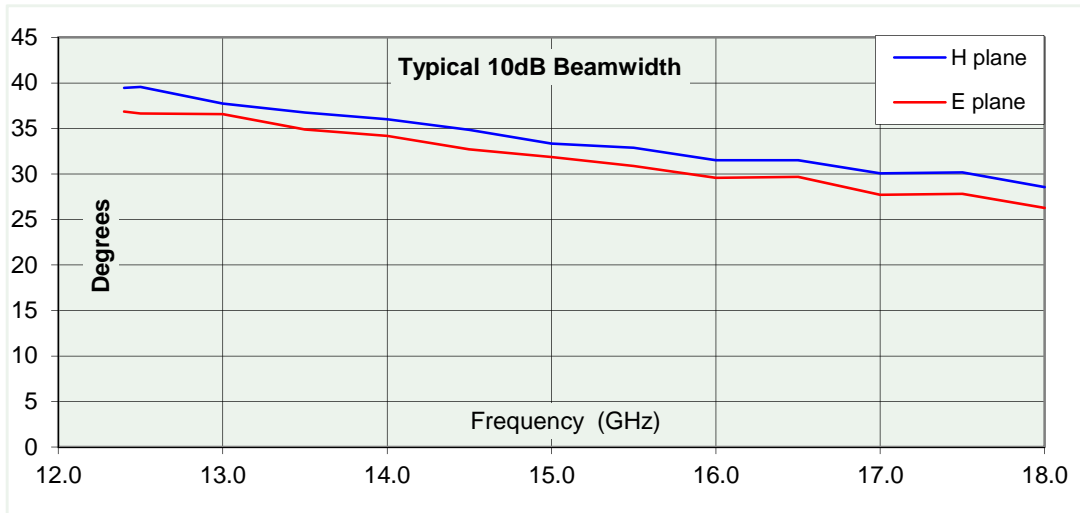
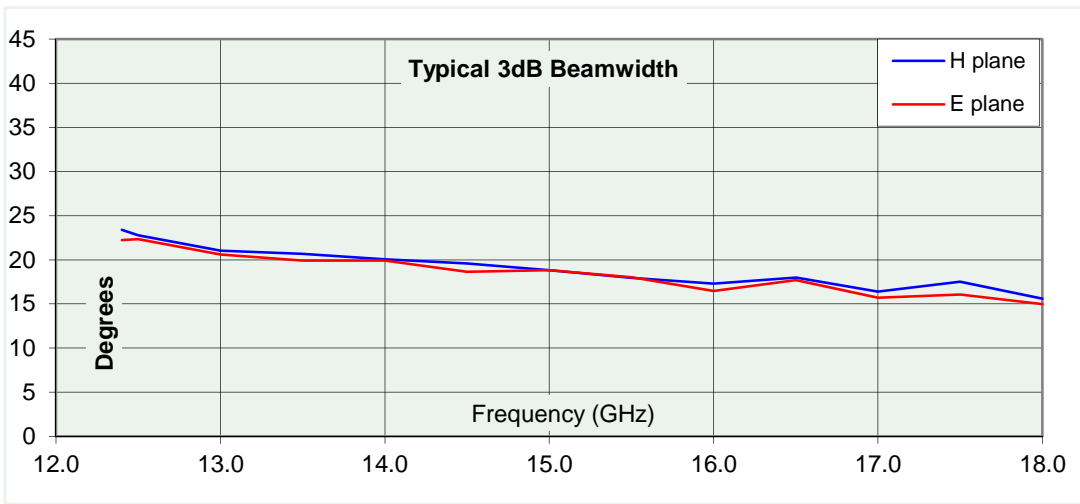
Typical Specification

| | |
|----------------|-----------------------------------|
| Frequency | 12.4 to 18 GHz |
| Connector type | Waveguide flange, UBR140 |
| Power Handling | 1.4 kW c.w. |
| VSWR | Typically < 1.15:1 |
| Gain | 18.2 to 21.4 dBi |
| Antenna Factor | 32.9 to 34.1 dB/m |
| 3dB Beamwidth | 15 to 23 degrees |
| 10dB Beamwidth | 26 to 40 degrees |
| Weight | 490 g nominal |
| Size- max. | 77 x 58 mm aperture x 178 mm long |
| Mounting | Waveguide flange, UBR140 |
| Construction | Electroformed copper, painted. |

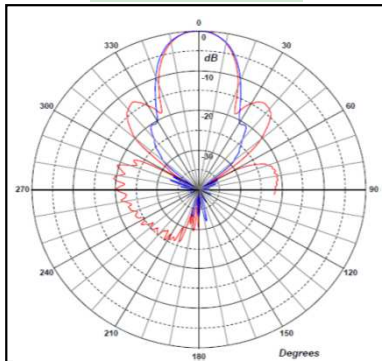
Typical Antenna Gain / Factor

This is calculated by reference to standard gain horn antennas, and cross checked with reference to the antenna beamwidth, with an estimated error of +/- 0.8dB.

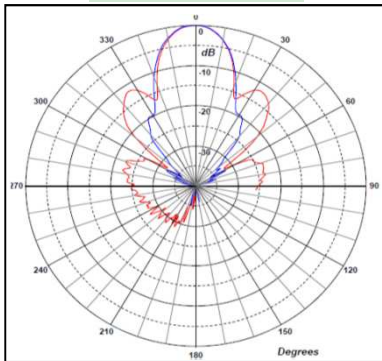




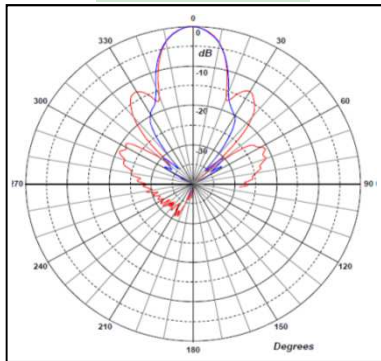
12.4 GHz



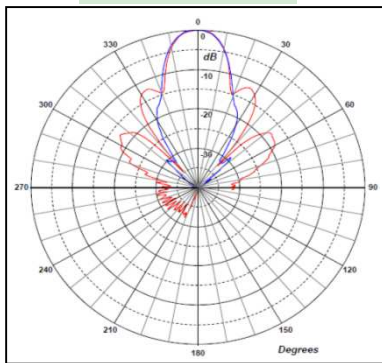
13.5 GHz



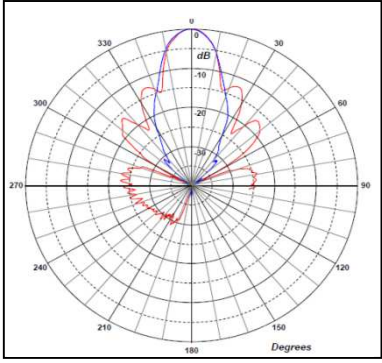
15 GHz



16.5 GHz



18 GHz



* Red trace = E-plane, Blue trace = H-plane cut

